

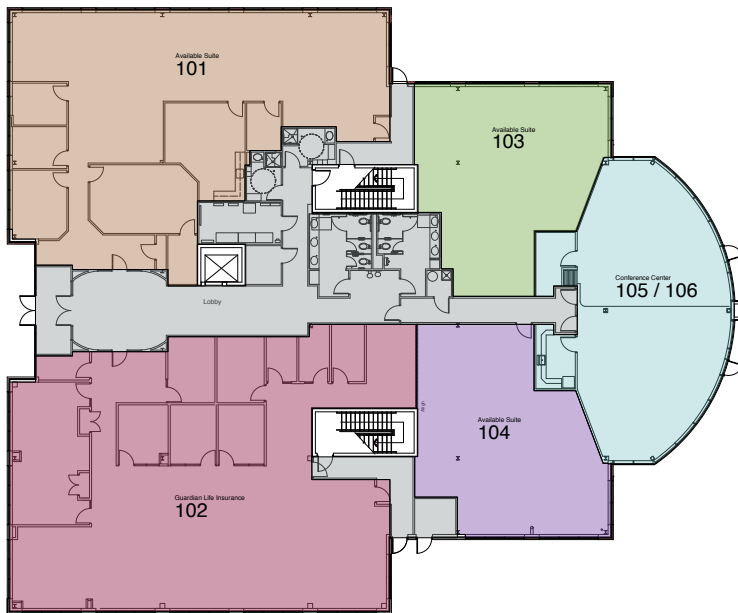
# Emerson Corporate Commons

8920 Stephens Road | Laurel, Maryland 20723

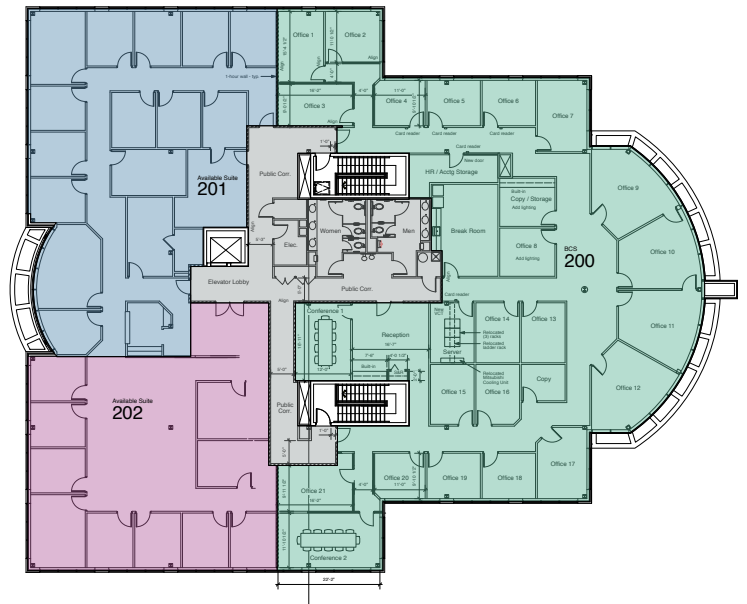
Total Square Footage: 29,836 SF



## First Floor



## Second Floor



# Knott

Know better realty.

ACQUISITION DEVELOPMENT CONSTRUCTION PROPERTY MANAGEMENT BROKERAGE

One Texas Station Court | Suite 200 | Timonium, MD 21093 | 443.689.8000 | [knottrealty.com](http://knottrealty.com)

# Emerson Corporate Commons

8920 Stephens Road | Laurel, Maryland 20723

Total Square Footage: **29,836 SF**



## Building Features

- 29,836 Square Foot, Two-Story Office Building on 2.8 Acres
- 2,000± Square Foot Conference Center with Catering Kitchen, 80-100 Seat Capacity, and Soundproof Movable Wall System
- M/F Showers with Locker Area
- 4 Parking Spaces per 1,000 SF Leased
- 14,000 SF Floor Plates

## Location Features

- Strategic Baltimore-Washington Corridor Location with "Traffic-Light-Free" Access to I-95 and MD Route 216
- Proximity to Ft. Meade, JHU APL, NASA, White Oak Federal Research, and other Agencies and Employment Centers
- Just minutes from shops and restaurants at Historic Savage Mill and Maple Lawn.
- Best Workplaces for Commuters: Recognized as one of the Best Workplaces for Commuters by the National Center for Transit Research for its commuter and environmentally friendly policies.



**Taylor J. Fields**, Vice President of Leasing

443-689-8027 **DIRECT** | 443-844-9369 **MOBILE** | tfields@knottrealty.com **EMAIL**

**Jannine B. Hayes**, Commercial Leasing Representative

443-689-8023 **DIRECT** | 443-908-0478 **MOBILE** | jhayes@knottrealty.com **EMAIL**

**ACQUISITION** **DEVELOPMENT** **CONSTRUCTION** **PROPERTY MANAGEMENT** **BROKERAGE**

One Texas Station Court | Suite 200 | Timonium, MD 21093 | 443.689.8000 | [knottrealty.com](http://knottrealty.com)

**Knott**  
Know better realty.